



# Paralympic Press Accommodation Guide

JUNE 2015



# Paralympic Press Accommodation Guide

JUNE 2015

1	Introduction.....	4
	Quick guide to reserving press accommodation .....	5
2	The Rio 2016 press accommodation region .....	6
	2.1 The Paralympic clusters.....	7
	2.2 Rio 2016 Competition venues map.....	9
	2.3 Press accommodation map.....	11
3	Information about press hotels .....	13
	3.1 Press accommodation in the Barra cluster .....	13
	3.2 Press accommodation in the Copacabana cluster.....	21
	3.3 Press accommodation in the Maracanã cluster .....	29
4	Press accommodation rates and reservation procedures .....	34
	4.1 Hotels summary .....	37

Welcome to the Press Accommodation Guide for the Rio 2016 Paralympic Games.

The accommodation for the Paralympic Games will be in three of the four Olympic clusters in Rio de Janeiro – Barra, Maracanã and Copacabana.

This guide is written specifically for the accredited written and photographic press and non-rights holding broadcasters. We have included as much information as possible to ensure you can make the best choices for your accommodation.

Some points to keep in mind regarding press accommodation for the Paralympic Games:

- You can already choose and reserve your hotel directly on the reservation website at <https://omsportal.rio2016.com>
- You can make your payment via Visa credit card
- There is no minimum stay period

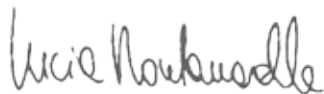
In order to ensure you are able to secure accommodation we urge you to reserve your rooms as soon as possible and in any case by the deadline of 31 August 2015.

Please be sure to check the Press Operations extranet regularly (<https://rioexchange.rio2016.com>) for updates pertaining to the accommodation.

As always, should you have any questions or queries at all, we remain at your disposal.

We look forward to welcoming you in Rio!

Best,



**Lucia Montanarella**

Head of Press Operations and Language Services

# Quick guide to reserving press accommodation

1. Read carefully this Paralympic Press Accommodation Guide, giving particular attention to the hotels descriptions and the section 'Press accommodation rates and reservation procedures';
2. The reservation period for the Paralympic Games is from June 29 to September 30, 2015.
3. A login to the Rio 2016 Accommodation Reservation System will be sent to the contact appointed in the Press by Number form sent by the National Paralympic Committees (NPCs). If a different contact will be appointed for accommodation bookings, please send the details to [pressoperations@rio2016.com](mailto:pressoperations@rio2016.com)
4. Once you have logged into the system, you can search the hotels available to Press, and reserve your room(s). Please be sure to take careful consideration of the dates and the number of rooms and nights you will need. The deadline to accept the Terms & Conditions and make your reservation is 31 August 2015;
5. Please note that you will not be able to reserve more rooms than the number of accreditations allocated to your press organisation;
6. The games nights are from 1 to 20 September 2016. If you need hotel rooms outside the period, please email Press Operations at [pressoperations@rio2016.com](mailto:pressoperations@rio2016.com);
7. A 60 per cent deposit is due by 30 September 2015. When you make your accommodation reservation, you will be given the following options:
  - Request to be invoiced to pay the 60 per cent deposit by wire transfer. Payment must be received by Rio 2016 by the deadline of 30 September 2015.
  - Pay the 60 per cent deposit online immediately with Visa credit card.
  - Defer the 60 per cent deposit online with Visa credit card for any time prior to the deadline of 30 September 2015.
  - Pay 100 per cent online immediately with Visa credit card;
8. **The first deposit must be paid by 30 September 2015 or you will lose the reservation. The second (final) payment is done by 31 March 2016 or the reservation and the 60 percent deposit will be lost.**

## KEY DATES

ITEM	DATE
Deadline to accept Terms & Conditions and finalise reservation	31 August 2015
Payment due: 60% of the total (or the full amount)	30 September 2015
Payment due: balance (remaining 40%)	31 March 2016

# 2

## The Rio 2016 press accommodation region

The Paralympic events will be staged in 21 venues, in Rio de Janeiro. They are spread over four Paralympic clusters: Barra, Copacabana, Deodoro and Maracanã.

Press accommodation will be offered in press hotels based in three clusters of the Paralympic Games.

In the Copacabana, Barra and Maracanã clusters, Rio 2016 has identified two, three and four star hotels.

There will be a dedicated Media Transport system (TM) that will provide transport between the press accommodation sites and the Paralympic venues.

Media transport shuttles will have stops close to the accommodation. However, please note that due to close proximity of many hotels, the pick- up points will be located within short walking distance of the hotels and not at the hotel entrance itself.

The Media Transport Mall at the Olympic Park will be adjacent to the Main Press Centre and will be the connection from the MPC to the competition venues. Maracanã and Copacabana will have a support hub each (Downtown and Leme hubs) to connect the hotels within the cluster to some key competitions venues and MPC.



## 2.1 THE PARALYMPIC GAMES CLUSTERS



Aerial view of the Barra beach. The Barra cluster is the home of 14 Paralympic venues, including the Olympic Park and the Main Press Centre (MPC).

### Barra

The Barra neighborhood is in the most recently urbanised area of Rio – Barra da Tijuca, which is often simply referred to as Barra. Located in the southwest of Rio, the area has many new shopping centres, restaurants and cinemas and boasts one of the best beaches in Rio.

The Barra cluster will be the heart of the Rio 2016 Paralympic Games and will be home to Barra Olympic Park, the largest concentration of Games venues, plus the Riocentro exhibition centre that has three pavilions. In all, the 12 competition venues in Barra will stage 13 Paralympic sport disciplines. The Olympic Park will also be home to the Main Press Centre.



The statue of Christ the Redeemer overlooking the Lagoa Rodrigo de Freitas, where the Lagoa stadium will host the rowing and canoe sprint events.

### Copacabana

The Copacabana cluster is one of Rio de Janeiro's most famous neighborhoods, and is defined by its 4km-long crescent-shaped beach.

A little further inland, the stunning Lagoa Rodrigo de Freitas, surrounded by mountains and with Christ the Redeemer in the backdrop, will be the site of Lagoa Stadium. This venue will stage the rowing and canoe sprint events. In the northern part of the Copacabana cluster there is one more venue: Marina da Glória, the base for the sailing events.



The Maracanã will stage the opening and closing ceremonies.

### **Maracanã**

The Maracanã cluster is in the northern part of Rio, close to the city centre. It includes two of Rio's most famous landmarks: the Maracanã stadium, which will stage the opening and closing ceremonies and Sambódromo, the home of the carnival parade that will host the archery events. The Olympic Stadium will stage the athletics track and field events.

The Maracanã cluster is also home to iconic touristic and cultural attractions such as the steps of Santa Teresa, the Municipal Theatre, the Museums of Modern and Fine Art and the Lapa Arches, where there is a vibrant nightlife with many restaurants, bars, and samba shows to choose from.



The Deodoro cluster is surrounded by hillside.

### **Deodoro**

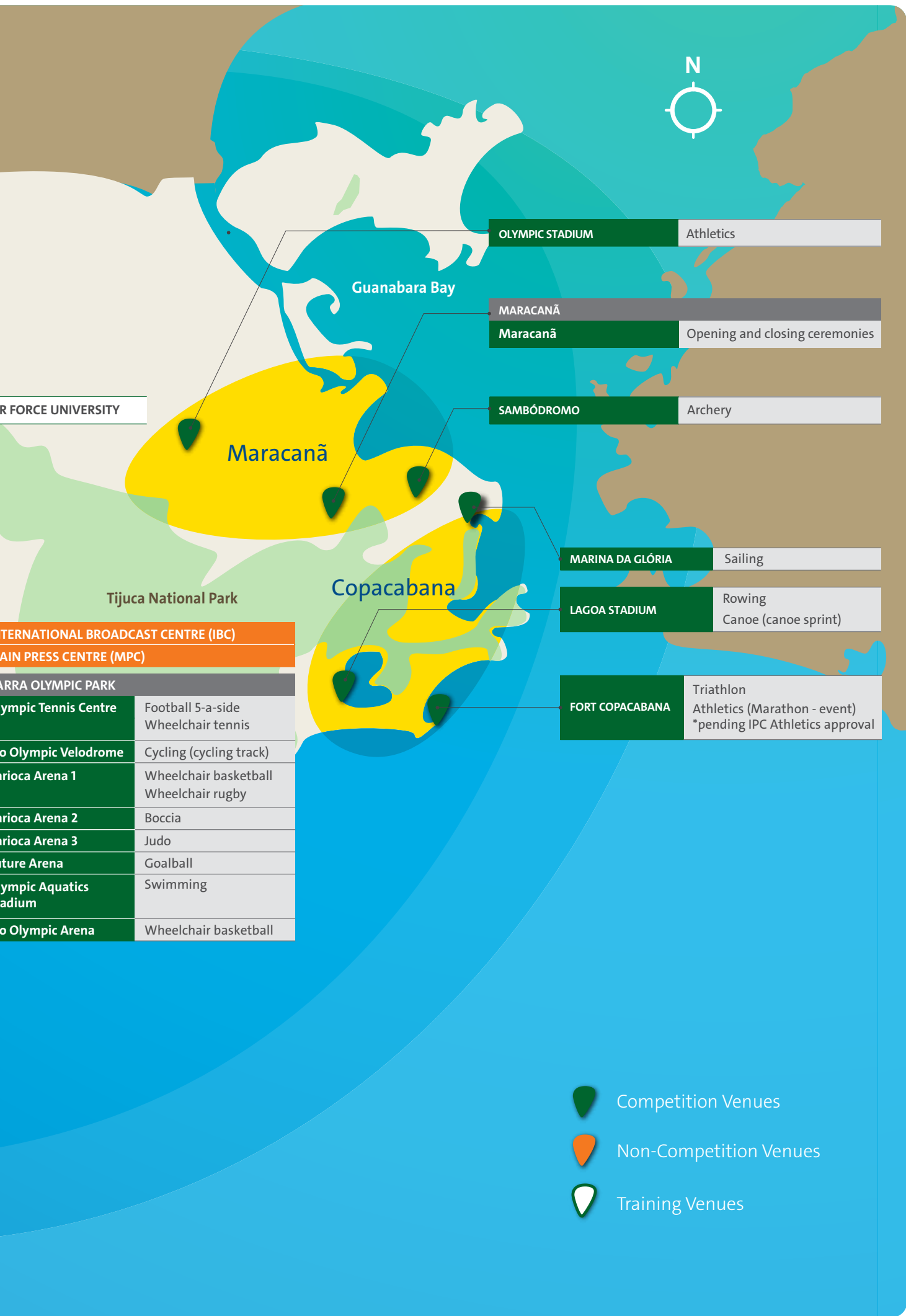
The Deodoro cluster is located in the outer west zone of Rio de Janeiro. The region has the highest concentration of military personnel in Latin America.

Surrounded by green areas and hillside, the Deodoro cluster will be home to the shooting, football 7-a-side, wheelchair fencing and equestrian events.



2.2 RIO 2016 COMPETITION VENUES MAP





OLYMPIC STADIUM      Athletics

MARACANÃ  
Maracanã      Opening and closing ceremonies

SAMBÓDROMO      Archery

MARINA DA GLÓRIA      Sailing

LAGOA STADIUM      Rowing  
Canoe (canoe sprint)

FORT COPACABANA      Triathlon  
Athletics (Marathon - event)  
\*pending IPC Athletics approval

AR FORCE UNIVERSITY

Tijuca National Park

INTERNATIONAL BROADCAST CENTRE (IBC)

MAIN PRESS CENTRE (MPC)

PARA OLYMPIC PARK

Olympic Tennis Centre      Football 5-a-side  
Wheelchair tennis

Olympic Velodrome      Cycling (cycling track)

Marica Arena 1      Wheelchair basketball  
Wheelchair rugby

Marica Arena 2      Boccia

Marica Arena 3      Judo

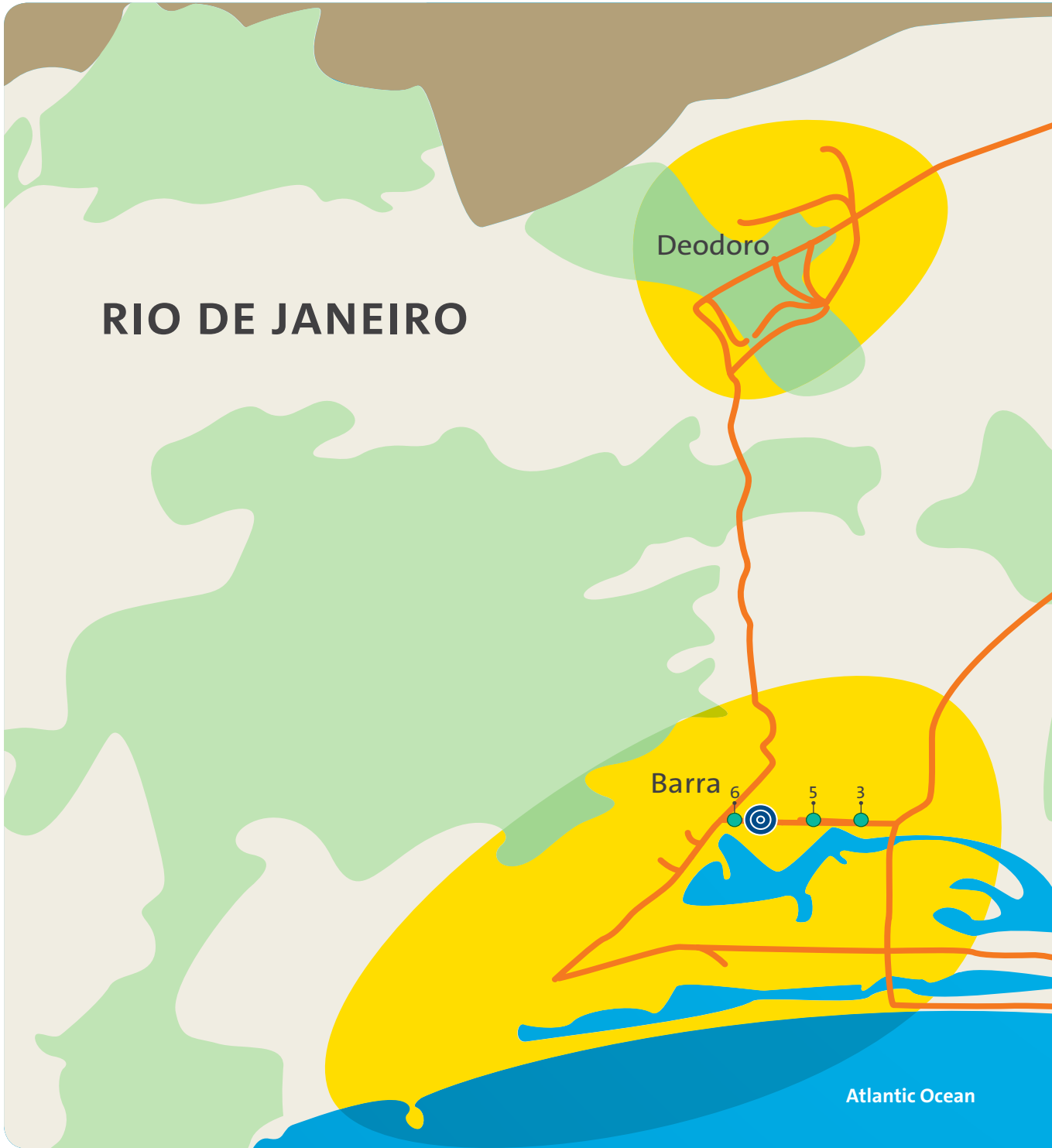
Future Arena      Goalball

Olympic Aquatics Stadium      Swimming

Olympic Arena      Wheelchair basketball

-  Competition Venues
-  Non-Competition Venues
-  Training Venues

2.3 PRESS ACCOMMODATION MAP



CODE	ACCOMMODATION
1	Entremares Hotel
2	Gaivota Hotel
3	Ibis RJ Parque Olímpico
4	Mercure Praia da Barra
5	Monza
6	Parque Olímpico (IBC/MPC Hotel)
7	Serramar
8	Benidorm Palace Hotel
9	Copacabana Mar
10	Copacabana Rio Hotel

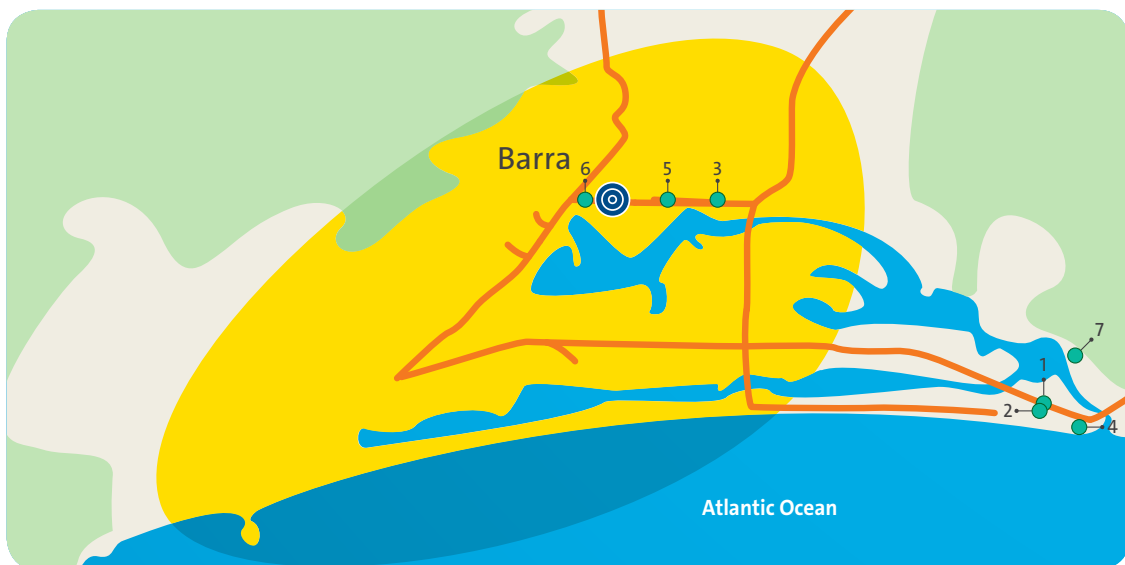
CODE	ACCOMMODATION
11	Copacabana Sul Hotel
12	Ibis Budget Copacabana
13	Ibis Budget RJ Praia de Botafogo
14	Windsor Palace Hotel
15	Holiday Inn Express
16	Hotel Bragança
17	Ibis Rio de Janeiro Centro
18	Ibis Budget Nova América



# 3 | Information about press hotels

## 3.1 PRESS ACCOMMODATION IN THE BARRA CLUSTER

In the map below is the Barra cluster with the numbers indicating where the 7 hotels are located.



### Competition Venues in the Barra Cluster:

- Olympic Aquatics Stadium
- Carioca Arena 1,2 &3
- Future Arena
- Rio Olympic Arena
- Rio Olympic Velodrome
- Riocentro
- Rio Olympic Tennis Centre
- Pontal

For the list of sport events per venue please refer to the Competition Venues Map (page 9).

CODE	ACCOMMODATION
1	Entremares Hotel
2	Gaivota Hotel
3	Ibis Parque Olímpico
4	Mercure Praia da Barra
5	Monza
6	Parque Olímpico (IBC / MPC Hotel)
7	Serramar

# 1. Entremares Hotel

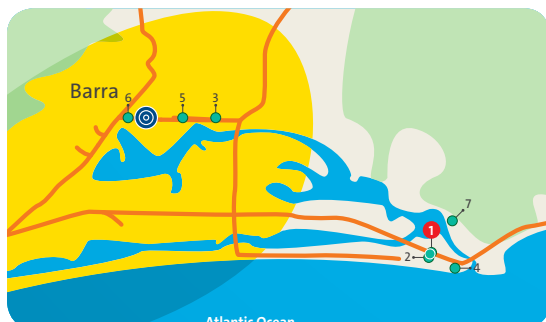
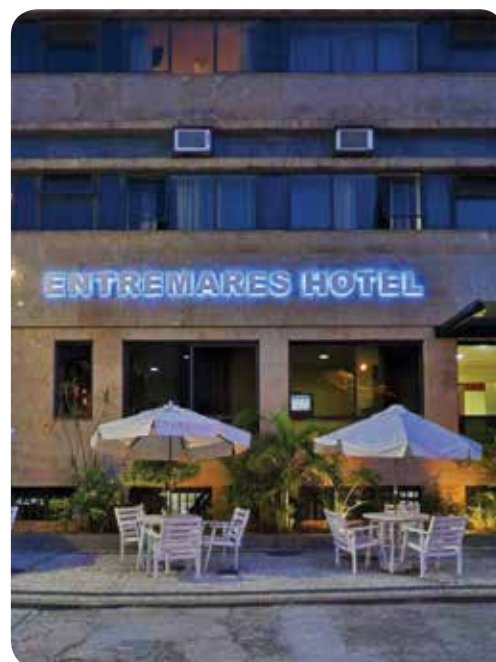
Category: Economic ★★★

## OVERVIEW

The Entremares Hotel is located in Barra, it is walking distance from the beach, as well as several bar and restaurant options.

## SERVICES AND FACILITIES

- Shower
- Cable TV
- Safe in room
- Bar fridge
- Laundry facilities
- Elevator
- Restaurant
- Room service
- Concierge
- Air conditioning
- Meeting rooms
- Parking



## DETAILED INFORMATION

**Address:** Avenida Érico Veríssimo, 846  
Barra da Tijuca - RJ

**Status:** existing

**Room rate:** 254 USD

**Website:** [www.entremareshotel.com.br](http://www.entremareshotel.com.br)

**Internet:** wi-fi

**Accessible rooms:** No

## DISTANCES USING THE MEDIA TRANSPORT SYSTEM

International Airport: 41km

Main Press Centre, Olympic Park: 16km

## 2. Gaivota Hotel

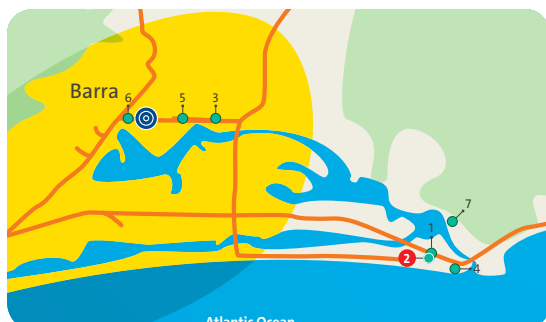
Category: Economic ★★

### OVERVIEW

The Gaivota Hotel is located in Barra, within walking distance from the beach. There are stores, bars and restaurants nearby.

### SERVICES AND FACILITIES

- Shower
- Cable TV
- Safe in room
- Mini bar
- Laundry Facilities
- Business centre
- Concierge
- Elevator
- Restaurant
- Sauna
- Air conditioning
- Room service
- Meeting rooms
- Parking



### DETAILED INFORMATION

**Address:** Avenida Belizário Leite Andrade Neto, 406  
Barra da Tijuca - RJ

**Status:** existing

**Room rate:** 254 USD

**Website:** [www.gaivotahotel.com.br](http://www.gaivotahotel.com.br)

**Internet:** wi-fi

**Accessible rooms:** 04

### DISTANCES USING THE MEDIA TRANSPORT SYSTEM

International Airport: 34km

Main Press Centre, Olympic Park: 16km

### 3. Ibis Parque Olímpico

Category: Economic ★★★

#### OVERVIEW

The Ibis Parque Olímpico will be located close to the Barra Olympic Park, with easy access to the main spots in the region, such as shopping centres, supermarkets, cinemas, restaurants and bars.

#### SERVICES AND FACILITIES

- Shower
- Cable TV
- Safe in room
- Bar fridge
- Laundry facilities
- Elevator
- Restaurant
- Rooms service
- Concierge
- Air conditioning
- Parking
- Business centre



#### DETAILED INFORMATION

**Address:** Avenida Embaixador Abelardo Bueno, 1511  
Barra da Tijuca – RJ

**Status:** newly built

**Room rate:** 254 USD

**Internet:** wi-fi

**Accessible rooms:** 01

#### DISTANCES USING THE MEDIA TRANSPORT SYSTEM

International Airport: 31km

Main Press Centre, Olympic Park: 3km



## 4. Mercure Praia da Barra

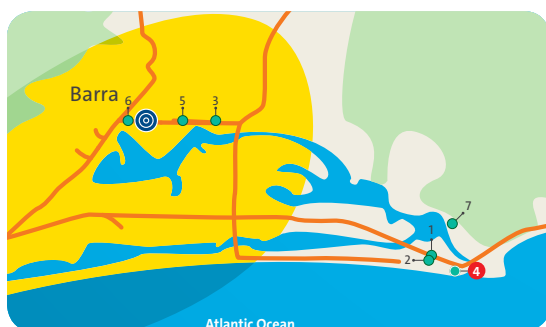
Category: Touristic ★★★★★

### OVERVIEW

The Mercure Praia da Barra is located on Pepê beach, on the seafront in the Barra da Tijuca district. It is a brand new hotel, with two bars, a restaurant and a large pool area, which also includes a sauna and fitness centre. The hotel is within walking distance to the beach as well as various bars and restaurants.

### FACILITIES

- Shower
- Cable TV
- Hair dryer
- Safe in room
- Bar fridge
- Laundry facilities
- Elevator
- Restaurant
- Room service
- Concierge
- Air conditioning
- Swimming pool
- Fitness centre
- Sauna
- Meeting rooms
- Accessible rooms
- Business centre
- Spa
- Parking



### DETAILED INFORMATION

**Address:** Avenida do Pepê, 56  
Barra da Tijuca - RJ

**Room rate:** 313 USD

**Website:** [www.mercure.com](http://www.mercure.com)

**Internet:** wi-fi and broadband

**Accessible rooms:** No

### DISTANCES USING THE MEDIA TRANSPORT SYSTEM

International Airport: 40km

Main Press Centre, Olympic Park: 16km

## 5. Monza

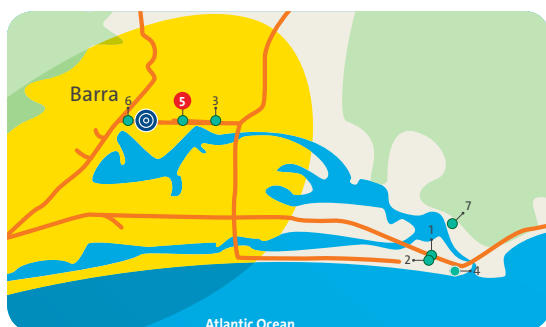
Category: Economic ★★★

### OVERVIEW

The Monza hotel is located very close to the Olympic Park. The hotel also offers convenient access to beaches shopping centres and various restaurants and theatres.

### FACILITIES

- Shower
- Cable TV
- Safe in room
- Mini bar
- Laundry facilities
- Business centre
- Elevator
- Restaurant
- Air conditioning
- Room service
- Swimming Pool
- Parking



### DETAILED INFORMATION

**Address:** Avenida Embaixador Abelardo Bueno, 980

Barra da Tijuca – RJ

**Status:** existing

**Room rate:** 254 USD

**Website:** [www.monzahoteis.com.br](http://www.monzahoteis.com.br)

**Internet:** wi-fi

**Accessible rooms:** 03

### DISTANCES USING THE MEDIA TRANSPORT SYSTEM

International Airport: 34km

Main Press Centre, Olympic Park: 2.5km

## 6. Parque Olímpico (IBC / MPC Hotel)

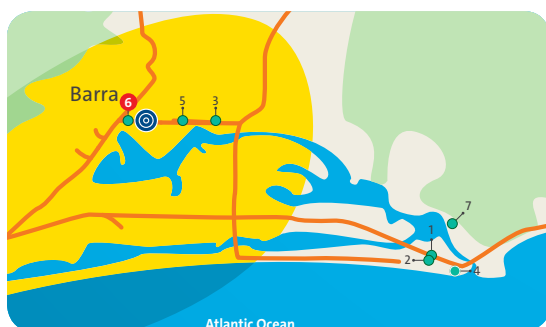
Category: Touristic ★★★★★

### OVERVIEW

The Parque Olímpico – MPC / IBC hotel will be a newly constructed hotel located right next to the Olympic Park.

### FACILITIES

- Shower
- Cable TV
- Safe in room
- Mini bar
- Laundry facilities
- Elevator
- Restaurant
- Concierge
- Air conditioning
- Swimming pool
- Sauna
- Fitness centre



### DETAILED INFORMATION

**Address:** Avenida Embaixador Abelardo Bueno, 5001

Barra da Tijuca – RJ

**Status:** Construction/newly built

**Room rate:** 348 USD

**Internet:** wi-fi

**Accessible rooms:** 03

### DISTANCES USING THE MEDIA TRANSPORT SYSTEM

International Airport: 27.7 km

Main Press Centre, Olympic Park: 0 km

## 7. Serramar

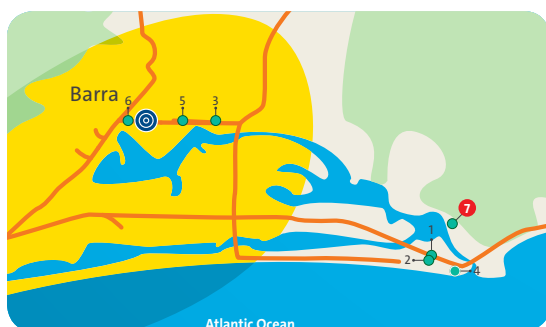
Category: Economic ★★★

### OVERVIEW

The Serramar is an existing hotel that is surrounded by greenery. The hotel is close to the Gigoia Island, where many restaurants and bars can be found. The newly constructed metro will also be located not far from this hotel.

### FACILITIES

- Shower
- Cable TV
- Safe in room
- Mini bar
- Laundry facilities
- Restaurant
- Room service
- Concierge
- Parking



### DETAILED INFORMATION

**Address:** Est. Da Barra da Tijuca, 1020

Barra da Tijuca- RJ

**Status:** existing

**Room rate:** 254 USD

**Website:** [www.hotelserramar.com.br](http://www.hotelserramar.com.br)

**Internet:** wi-fi and broadband

**Accessible rooms:** No

### DISTANCES USING THE MEDIA TRANSPORT SYSTEM

International Airport: 37.2km

Main Press Centre, Olympic Park: 15.8km

### 3.2 PRESS ACCOMMODATION IN THE COPACABANA CLUSTER

The map below shows the 7 hotels allocated to press that are rated either two, three, or four stars, in the Copacabana cluster, in the south zone of Rio.



#### Competition Venues in the Copacabana Cluster:

- Fort Copacabana
- Lagoa Stadium
- Marina da Gloria

For the list of sport events per venue please refer to the Competition Venues Map (page9).

CODE	ACCOMMODATION
8	Benidorm Palace Hotel
9	Copacabana Mar
10	Copacabana Rio Hotel
11	Copacabana Sul Hotel
12	Ibis Budget Copacabana
13	Ibis Budget Praia de Botafogo
14	Windsor Palace Hotel

## 8. Benidorm Palace Hotel

Category: Economic ★★★

### OVERVIEW

The Benidorm Palace Hotel is situated in the touristic neighbourhood of Copacabana and is just one block away from the beach. It is also close to many bars, restaurants and supermarkets.

### SERVICES AND FACILITIES

- Shower
- Hairdryer
- Cable TV
- Safe in room
- Mini bar
- Elevator
- Business centre
- Concierge
- Laundry facilities
- Restaurant
- Room service
- Swimming pool
- Sauna
- Fitness centre
- Parking
- Accessible rooms
- Meeting room



### DETAILED INFORMATION

**Address:** Rua Barata Ribeiro, 547  
Copacabana - RJ

**Status:** existing

**Website:** [www.benidorm.com.br](http://www.benidorm.com.br)

**Room rate:** 254 USD

**Internet:** wi-fi and broadband

**Accessible rooms:** 01

### DISTANCES USING THE MEDIA TRANSPORT SYSTEM

International Airport: 31km

Main Press Centre, Olympic Park: 35km

## 9. Copacabana Mar Hotel

Category: Economic ★★★

### OVERVIEW

The Copacabana Mar Hotel is conveniently located in Copacabana and close to many restaurants and entertainment options. The hotel is one and a half blocks from Copacabana beach.

### SERVICES AND FACILITIES

- Shower
- Cable TV
- Safe in room
- Mini bar
- Elevator
- Concierge
- Air Conditioning
- Beach within walking distance
- Restaurant
- Room service
- Swimming pool
- Sauna
- Fitness centre
- Accessible rooms
- Parking



### DETAILED INFORMATION

**Address:** Rua Ministro Viveiros de Castro, 155  
Copacabana - RJ

**Status:** existing

**Website:** [www.copacabanamarhotel.com](http://www.copacabanamarhotel.com)

**Room rate:** 254 USD

**Internet:** wi-fi

**Accessible rooms:** 01

### DISTANCES USING THE MEDIA TRANSPORT SYSTEM

International Airport: 30km

Main Press Centre, Olympic Park: 36km



## 10. Copacabana Rio Hotel

Category: Economic ★★★

### OVERVIEW

The Copacabana Rio Hotel is located one block away from Copacabana beach, and features a heated pool, sauna, steam room, a fitness centre and a bar. The hotel rooftop has a panoramic view of the Copacabana beach, the Sugarloaf and Ipanema and Leblon beaches.

### SERVICES AND FACILITIES

- Shower
- Hairdryer
- Cable TV
- Safe in room
- Mini bar
- Elevator
- Business centre
- Concierge
- Laundry facilities
- Restaurant
- Room service
- Swimming pool
- Sauna
- Fitness centre
- Accessible rooms
- Meeting room



### DETAILED INFORMATION

**Address:** Avenida Nossa Senhora de Copacabana, 1256  
Copacabana- RJ

**Status:** existing

**Website:** [www.copacabanariohotel.com.br](http://www.copacabanariohotel.com.br)

**Room rate:** 254 USD

**Internet:** wi-fi

**Accessible rooms:** 01

### DISTANCES USING THE MEDIA TRANSPORT SYSTEM

International Airport: 31km

Main Press Centre, Olympic Park: 33km



## 11. Copacabana Sul Hotel

**Category:** Economic ★★★

### OVERVIEW

The Copa Sul Hotel is situated just one block away from Copacabana beach and is close to many bars, restaurants and supermarkets. It is located near the General Osório metro station.

### SERVICES AND FACILITIES

- Shower
- Cable TV
- Safe in room
- Mini bar
- Elevator
- Business centre
- Concierge
- Laundry facilities
- Restaurant
- Room service
- Sauna
- Fitness centre
- Meeting room



### DETAILED INFORMATION

**Address:** Avenida Nossa Senhora de Copacabana, 1284  
Copacabana- RJ

**Status:** existing

**Website:** [www.copasul.com.br](http://www.copasul.com.br)

**Room rate:** 254 USD

**Internet:** wi-fi

**Accessible rooms:** 01

### DISTANCES USING THE MEDIA TRANSPORT SYSTEM

International Airport: 31km

Main Press Centre, Olympic Park: 33km

## 12. Ibis Budget Copacabana

Category: Standard ★★

### OVERVIEW

The Ibis Budget Copacabana is located in a residential part of the famous Rio neighbourhood, next to a large shopping area and the Cantagalo metro station is just a few minutes from the hotel.

### SERVICES AND FACILITIES

- Shower
- Cable TV
- Elevator
- Accessible rooms



### DETAILED INFORMATION

**Address:** Rua Constante Ramos, 96

Copacabana – RJ

**Status:** Construction/newly built

**Website:** [www.ibis.com](http://www.ibis.com)

**Room rate:** 181 USD

**Internet:** wi-fi

**Accessible rooms:** 06

### DISTANCES USING THE MEDIA TRANSPORT SYSTEM

International Airport: 23km

Main Press Centre, Olympic Park: 29,7km

## 13. Ibis Budget Praia de Botafogo

Category: Standard ★★

### OVERVIEW

The Ibis Budget Praia de Botafogo is located in a residential district of Botafogo. It is only 500m away from the Botafogo metro station.

### SERVICES AND FACILITIES

- Shower
- Hairdryer
- Cable TV
- Safe in room
- Minibar
- Elevator
- Restaurant
- Parking
- Accessible rooms



### DETAILED INFORMATION

**Address:** Rua Natal, 24

Botafogo – RJ

**Status:** Construction/newly built

**Website:** [www.ibis.com](http://www.ibis.com)

**Room rate:** 181 USD

**Internet:** wi-fi

**Accessible rooms:** No

### DISTANCES USING THE MEDIA TRANSPORT SYSTEM

International Airport: 17km

Main Press Centre, Olympic Park: 33.9km via Leme Transport Hub

## 14. Windsor Palace Hotel

Category: Touristic ★★★★★

### OVERVIEW

The Windsor Palace Hotel is situated just one block away from the Copacabana beach and is close to many bars, restaurants and supermarkets.

### SERVICES AND FACILITIES

- Shower
- Hairdryer
- Cable TV
- Safe in room
- Mini bar
- Elevator
- Business centre
- Concierge
- Laundry facilities
- Restaurant
- Room service
- Swimming pool
- Sauna
- Fitness centre
- Accessible rooms



### DETAILED INFORMATION

**Address:** Rua Domingos Ferreira, 6  
Copacabana- RJ

**Status:** existing

**Website:** [www.windsorhoteis.com.br](http://www.windsorhoteis.com.br)

**Room rate:** 296 USD

**Internet:** wi-fi

**Accessible rooms:** No

### DISTANCES USING THE MEDIA TRANSPORT SYSTEM

International Airport: 30km

Main Press Centre, Olympic Park: 35km

### 3.3 PRESS ACCOMMODATION IN THE MARACANÃ CLUSTER

The map below shows the 4 hotels rated two and three stars allocated to press, in the Maracanã cluster, located in the north zone of Rio and not far from the city centre.



#### Competition Venues in the Maracanã Cluster:

- Olympic Stadium
- Maracanã
- Sambódromo

For the list of sport events per venue please refer to the Competition Venues Map (page 9).

CODE	ACCOMMODATION
15	Holiday Inn Express
16	Hotel Bragança
17	Ibis Rio de Janeiro Centro
18	Ibis Budget Nova América

## 15. Holiday Inn Express

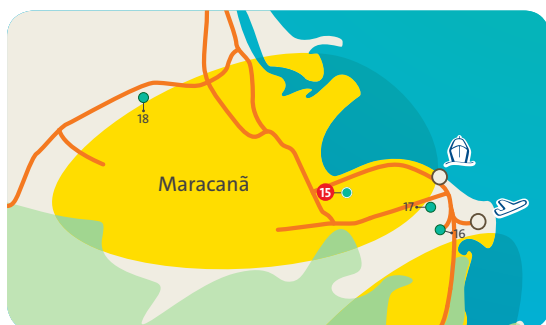
Category: Economic ★★★

### OVERVIEW

The Holiday Inn Express will be situated side by side with the Holiday Inn, located in the central Porto Maravilha district. The hotel will be within walking distance to various museums, parks and restaurants.

### SERVICES AND FACILITIES

- Shower
- Hairdryer
- Cable TV
- Safe in room
- Mini bar
- Elevator
- Concierge
- Laundry
- Restaurant
- Room service
- Swimming pool
- Sauna
- Fitness centre
- Meeting rooms



### DETAILED INFORMATION

**Address:** Street name TBA - December 2015  
Santo Cristo - RJ

**Status:** newly built

**Construction completion:** December 2015

**Room rate:** 254 USD

**Internet:** wi-fi

**Accessible rooms:** 10

### DISTANCES USING THE MEDIA TRANSPORT SYSTEM

International Airport: 15km

Main Press Centre, Olympic Park: 39km via Downtown Transport Hub

## 16. Hotel Bragança

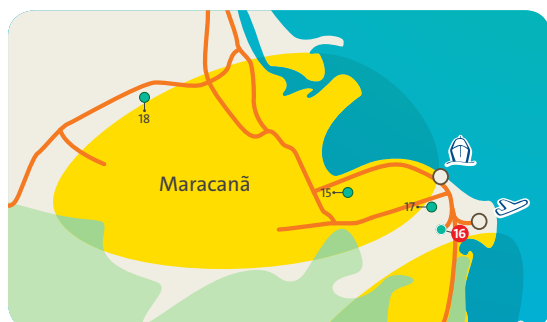
Category: Economic ★★★

### OVERVIEW

The Hotel Bragança will be located close to cultural attractions including the Municipal Theatre and the Museums of Modern and Fine Arts. The bohemian Lapa neighbourhood, with various options for bars and live music, is less than five minutes walk from the hotel.

### SERVICES AND FACILITIES

- Shower
- Hairdryer
- Cable TV
- Safe in room
- Mini bar
- Elevator
- Concierge
- Restaurant
- Room service
- Parking



### DETAILED INFORMATION

**Address:** Rua Visconde de Maranguape, 9  
Lapa - RJ

**Status:** newly built

**Construction completion:** December 2015

**Room rate:** 254 USD

**Internet:** wi-fi

**Accessible rooms:** 06

### DISTANCES USING THE MEDIA TRANSPORT SYSTEM

International Airport: 22km

Main Press Centre, Olympic Park: 39km via Downtown Transport Hub

## 17. Ibis Rio de Janeiro Centro

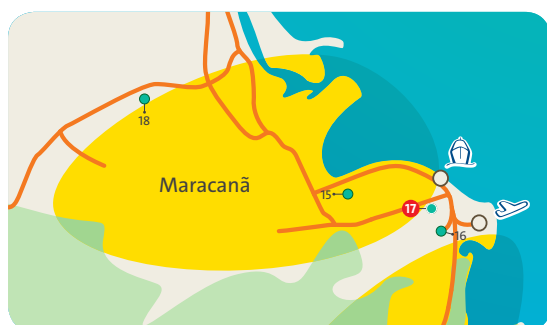
Category: Economic ★★★

### OVERVIEW

The Ibis Rio de Janeiro Centro is located in the heart of the historic centre of the city. It is very close to the Carioca metro station and the Santa Teresa tram terminal.

### SERVICES AND FACILITIES

- Shower
- Hairdryer
- Cable TV
- Safe in room
- Mini bar
- Elevator
- Concierge
- Business centre
- Laundry facilities
- Restaurant
- Parking



### DETAILED INFORMATION

**Address:** Rua Silva Jardim, 32  
Centro - RJ

**Status:** existing

**Website:** [www.ibis.com](http://www.ibis.com)

**Room rate:** 254 USD

**Internet:** wi-fi

**Accessible rooms:** 10

### DISTANCES USING THE MEDIA TRANSPORT SYSTEM

International Airport: 19km

Main Press Centre, Olympic Park: 42km via Downtown Transport Hub



## 18. Ibis Budget Nova América

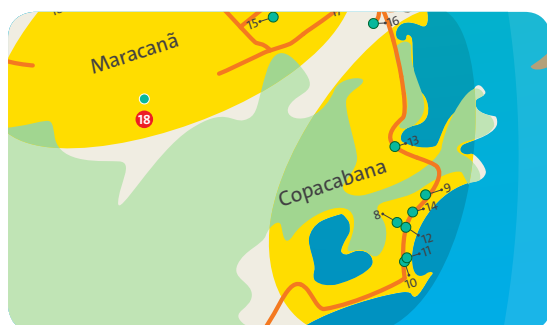
Category: Standard ★★

### OVERVIEW

The Ibis Budget Nova América hotel will be close to the Nova América Mall, where there are several restaurant and entertainment options. The hotel will have a direct connection to the Del Castilho metro station.

### SERVICES AND FACILITIES

- Shower
- Cable TV
- Elevator
- Concierge
- Restaurant
- Accessible rooms



### DETAILED INFORMATION

**Address:** Avenida Pastor Martin Luther King, 126  
Del Castilho - RJ

**Status:** newly built

**Construction completion:** December 2015

**Room rate:** 181 USD

**Internet:** wi-fi

**Accessible rooms:** 09

### DISTANCES USING THE MEDIA TRANSPORT SYSTEM

International Airport: 14km

Main Press Centre, Olympic Park: 20km

# 4

## Press accommodation rates and reservation procedures

This chapter outlines the rates, procedures and policies with regards to booking press accommodation for Rio 2016 Paralympic Games. Please read through this carefully and be sure to note the deadlines for making your reservation and payments.

After being notified of accreditation allotment by the respective National Paralympic Committee or other IPC-approved Responsible Organisation, such as an International Sport Federation, each press organization will receive a login to the Rio 2016 Accommodation Reservation System. The login will be sent to the contact informed in the Press by Number form and the press organisations may proceed with the reservations of the accommodation of their choice. Each organisation may only request a total number of rooms equal to the total number of accreditations it is being granted.

Rio 2016 will send each organisation the login for the online reservation system as the respective NPC return the completed Press by Number form.

### Room rates

Hotels in Rio de Janeiro are graded by the ABIH-RJ (Brazilian Hotel Industry Association - RJ). Categories and rates for press are below.

All accommodations for press (Standard, Economic and Touristic) include breakfast for up to two people.

STAR RATING	DESCRIPTION	ROOM RATE (USD)
Standard (2 stars)	Meets basic needs, clean, comfortable	181
Economic (3 stars)	Mid-scale, convenience plus comfort	254
Touristic (4 stars)	Superior, high quality, variety of amenities	296 - 348

All prices are per room, per night (regardless of occupancy). If you choose to put two people in one room, the price of the room remains the same. Rates are net in USD.

Prices **do not** include incidental charges including (but not limited to):

- Internet access charges (where applicable)
- Telephone charges
- Pay-per-view movies
- Laundry services
- Parking services (where available)
- Damage deposits

Rio 2016 is still in negotiation with every press hotel regarding provision of free internet access.

Accommodation facilities may require a major credit card (e.g. Visa) or a USD 300 cash renewable deposit to guarantee coverage of these expenses.

### Games Accommodation

Games nights are from 01 to 20 September 2016. During this period Rio 2016 has guaranteed room rates, as outlined in this guide. Outside of these dates, room rates are determined by individual hotels. If you need hotel rooms before 01 September 2016, please email Press Operations at [pressoperations@rio2016.com](mailto:pressoperations@rio2016.com) for assistance.

### Payment Schedule

INSTALLMENTS	AMOUNT	DATE
1 <sup>st</sup> payment *	60% *	30 September 2015 *
2 <sup>nd</sup> payment	40%	31 March 2016 *

\* 11.59pm - Brasília Time

Please note that the deadline to accept Terms & Conditions and finalise the reservation is 31 August 2015.

### No minimum stay period

You can reserve only the room nights you will actually need. There is no minimum stay period.

Please plan carefully. As there is no minimum stay period, you will need to study the competition schedule carefully and have

a high degree of certainty if you choose to reserve rooms for less than the complete allocated period (1 to 20 September 2016).

If you later determine that you need additional rooms or extra nights, Rio 2016 may no longer have rooms available for press. If you then reserve directly with the hotel (outside the Rio 2016 accommodation system), the prices of rooms, even in the same hotel, may increase substantially.

Please note that Rio 2016 cannot hold rooms unless they are reserved, confirmed with your reservation and paid for in full.

Rio 2016 is committed by contract to return to each hotel the rooms that are not confirmed. The released rooms may be negotiated directly with the hotels and reservation policies and rates in this case will be determined by each hotel.

### Cancellation policy

DATE OF CANCELLATION	POLICY
On or prior to September 30, 2015. *	100% refund on amount
paid From 1 October, 2015 to January 5, 2016. *	40% refund on amount paid
On or after January 6, 2016	No refund

\*11:59 Brasilia Time

### Accommodation Allocation Agreement (AAA)

The Accommodation Allocation Agreement (AAA) outlines the terms and conditions of the accommodation reservation contract. The AAA details reservation and cancellation policies, payment conditions and all relevant information as stated in this Paralympic Press Accommodation Guide.

The terms will be accepted by the client online when reserving accommodation through the online reservation system. Accommodation reservation and booking will only be accepted upon the client's agreement to these terms.

### Questions

Rio 2016 has endeavoured to gather as much information about the accommodation sites as possible, however, if after reading this guide you still have questions, do not hesitate to get in touch with the Press Operations team at [pressoperations@rio2016.com](mailto:pressoperations@rio2016.com).

4.1 HOTELS SUMMARY

	HOTEL / MEDIA VILLAGE	CATEGORY	CLUSTER	PRICE	DISTANCE TO MPC		INTERNET ACCESS	FOOD SERVICES	LAUNDRY SERVICES	PARKING	ACCESSIBLE ROOMS
					KM						
BARRA	1	Entremares Hotel	Economic	★★★	Barra	USD 254	16	Yes	Yes	Yes	No
	2	Gaiyota Hotel	Economic	★★★	Barra	USD 254	16	Yes	Yes	Yes	Yes
	3	Ibis Parque Olímpico	Economic	★★★	Barra	USD 254	3	Yes	Yes	Yes	Yes
	4	Mercure Praia da Barra	Touristic	★★★★★	Barra	USD 313	16	Yes	Yes	Yes	No
	5	Monza	Economic	★★★	Barra	USD 254	2.5	Yes	Yes	Yes	Yes
	6	Parque Olímpico (IBC/MPC Hotel)	Touristic	★★★★★	Barra	USD 348	0	Yes	Yes	No	Yes
	7	Serramar	Economic	★★★	Barra	USD 254	15.8	Yes	Yes	Yes	No
COPACABANA	8	Benidorm Palace Hotel	Economic	★★★	Copacabana	USD 254	34	Yes	Yes	Yes	Yes
	9	Copacabana Mar Hotel	Economic	★★★	Copacabana	USD 254	36	Yes	Yes	No	Yes
	10	Copacabana Rio Hotel	Economic	★★★	Copacabana	USD 254	33	Yes	Yes	No	Yes
	11	Copacabana Sul Hotel	Economic	★★★	Copacabana	USD 254	33	Yes	Yes	Yes	Yes
	12	Ibis Budget Copacabana	Standard	★★	Copacabana	USD 181	29,7	Yes	No	No	Yes
	13	Ibis Budget Praia de Botafogo	Standard	★★	Copacabana	USD 181	33,9	Yes	Yes	Yes	No
	14	Windsor Palace Hotel	Touristic	★★★★★	Copacabana	USD 296	35	Yes	Yes	No	No
MARACANÃ	15	Holiday Inn Express	Economic	★★★	Maracanã	USD 254	39	Yes	Yes	No	Yes
	16	Hotel Bragança	Economic	★★★	Maracanã	USD 254	39	Yes	Yes	No	Yes
	17	Ibis Rio de Janeiro Centro	Economic	★★★	Maracanã	USD 254	42	Yes	Yes	Yes	Yes
	18	Ibis Budget Nova América	Standard	★★	Maracanã	USD 181	20	Yes	Yes	No	Yes



WORLDWIDE PARALYMPIC PARTNER



OFFICIAL SPONSORS



Bradesco



Bradesco  
Seguros



Correios



Embratel



Claro



NISSAN OMEGA

OFFICIAL SUPPORTERS



OFFICIAL SUPPLIER

Casa da Moeda do Brasil EF Education First Ottobock

GOVERNMENTAL PARTNERS



**06.2015**

This material shall not be duplicated by any means, except with prior and express consent (in writing) from the Organizing Committee for the Rio 2016 Olympic and Paralympic Games. Authorisations for copy should be submitted by email to [brandprotection@rio2016.com](mailto:brandprotection@rio2016.com)

Rio 2016 Organising Committee for the  
Olympic and Paralympic Games

[rio2016.com](http://rio2016.com)