



2015 IPC Para Snowboard World Championships La Molina

Team's Handbook

January 2015



Dear friends,

Welcome to La Molina for the 2015 IPC Para Snowboard World Championships, which I am very pleased to say will be the first overseen by IPC Alpine Skiing.

It of course follows the fantastic debut of para-snowboard at the Sochi 2014 Paralympic Winter Games, where riders made history by becoming the first Paralympians in the sport.

You and your athletes are all pioneers and have played a special part in developing para-snowboard to this stage.

Naturally we cannot forget that we suffered a loss on this journey last year and the return to La Molina is a poignant reminder of that.

I believe that the moves we have made to introduce banked slalom, changes to the format of cross competitions and classification advances have shown us what we can do when we stand together and push forward.

Many athletes have said that these modifications will make a huge difference, not just to them, but for future generations. They believe it will make snowboard more accessible, competitive and attractive and I am immensely encouraged by that response.

Over 80 athletes from 20 countries have gathered here to continue along this path and whilst we may be three years away from the PyeongChang 2018 Paralympic Winter Games, the road starts here.

We now have a great opportunity to continue what we started in Sochi when para-snowboard made its entrance onto the biggest stage possible.

We will continue to develop the World and Europa Cups, IPCAS races and the youth programme, keeping the calendar full over the coming years. Together we can take this incredibly exciting and adrenalin-fuelled sport to new heights and audiences.

For now, I am confident that over the next days you will be well looked after by the organizers, and they will deliver an excellent competition.

In the meantime, I wish you the very best of luck for La Molina 2015.

Enjoy the competition

Sir Philip Craven MBE, IPC President



La Molina is a ski, snowboard and bike resort that welcomes everybody who wishes to enjoy the mountains in both the winter and summer, and this obviously includes people with disabilities.

La Molina is a mountain resort located in the Eastern Pyrenees, boasting accessible facilities for people with reduced mobility.

In fact, La Molina ski resort has led the way in accessibility since 2009, when it became only the second resort in the world to win a special IAKS architecture award for advanced sports facilities.

As a public entity of the FGC Group, the resort has for many years been sensitive to the needs of disabled people who enjoy mountain sports. That is why it reached an agreement in 2004 with the Johan Cruyff Foundation, which set up a permanent office in La Molina.

La Molina also enjoys excellent relations with the Catalan Sports Federation for Persons with Disabilities and with other similar organisations. Indeed, it has hosted several important events for disabled skiers, including three European Cups and the 2013 World Cup for the Disabled.

This season, the resort will host the IPC Alpine Skiing World Cup, from 7th to 11th January, and the IPC Para Snowboard World Championships, from 23rd February to 28th February. La Molina and the entire FGC Group will be working as hard as possible to ensure the complete success of these events.

Many thanks,

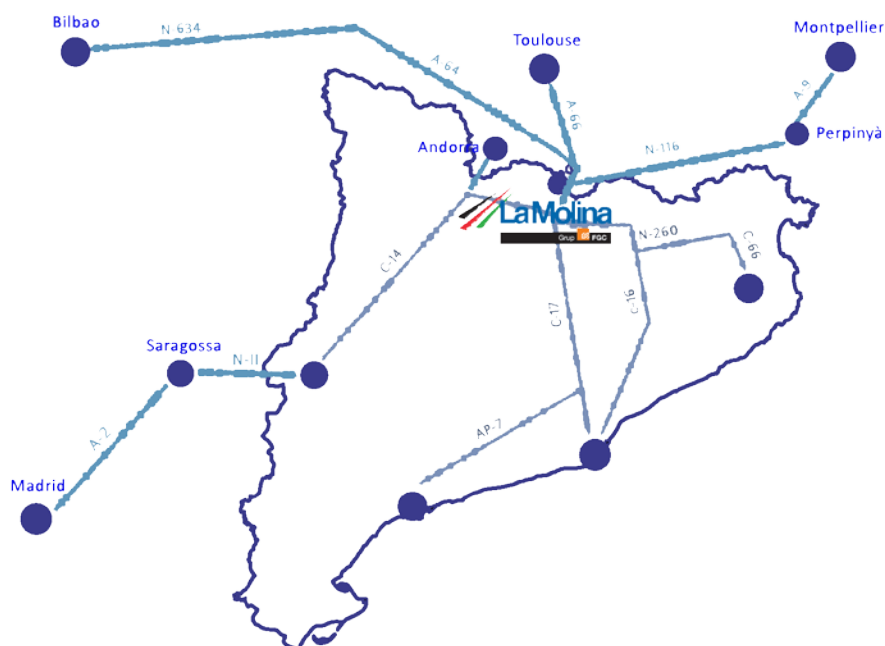
Enric Ticó

President of FGC

La Molina ski and snowboard resort

1 Location and distances

Address: La Molina Ski Resort
Edifici Telecabina, s/n
17537 La Molina, Spain
GPS: 42°20'03.90"N 1°56'04.59"E



Distances in Km: Barcelona – El Prat Airport to La Molina: 156km – 2h10
Girona – Costa Brava Airport to La Molina: 142km – 2h16

2 Transportation information from BCN airport to La Molina

Transport Fee:

46€ / person one way if the group has 5 or more people.

220€ / Trip one way if the group has 4 or less people.

NPC's must send the flight information no later than 01/02/2015. Clearly indicate the exact number of wheelchair users.

For travel arrangements please contact: ipc@lamolina.cat

Rental vehicles: for teams arriving by plane, rental vehicles are available through many national car rental agencies, please contact:

Barcelona – El Prat Airport		Girona – Costa Brava	
AVIS www.avis.es ☎ +34 932 983 600 ☎ +34 932 983 606	HERTZ www.hertz.es ☎ +34 932 983637 ☎ +34 932 983642	AVIS www.avis.es ☎ +34 972 474 333 ☎ +34 972 474 500 @: es.reservations@bcn.avis-europe.com	HERTZ www.hertz.es ☎ +34 972 186 619 ☎ +34 972 983 642 @: spgrn50@hertz.com
EUROPCAR www.europcar.es ☎ +34 90 210 5055 (T1 & T2) ☎ +34 934 782 632	ATESA www.atesa.es ☎ +34 932 983433 ☎ +34 932 983435	EUROPCAR www.europcar.es ☎ +34 972 186 618 ☎ +34 972 474 216	ATESA www.atesa.es ☎ +34 972 068 002 ☎ +34 972 473 971 @: 216@atesa.es

3 Ground map



1 race office team captains meeting

2 alabaus chair lift

3 main offices and accreditations
medical center and doping
press room

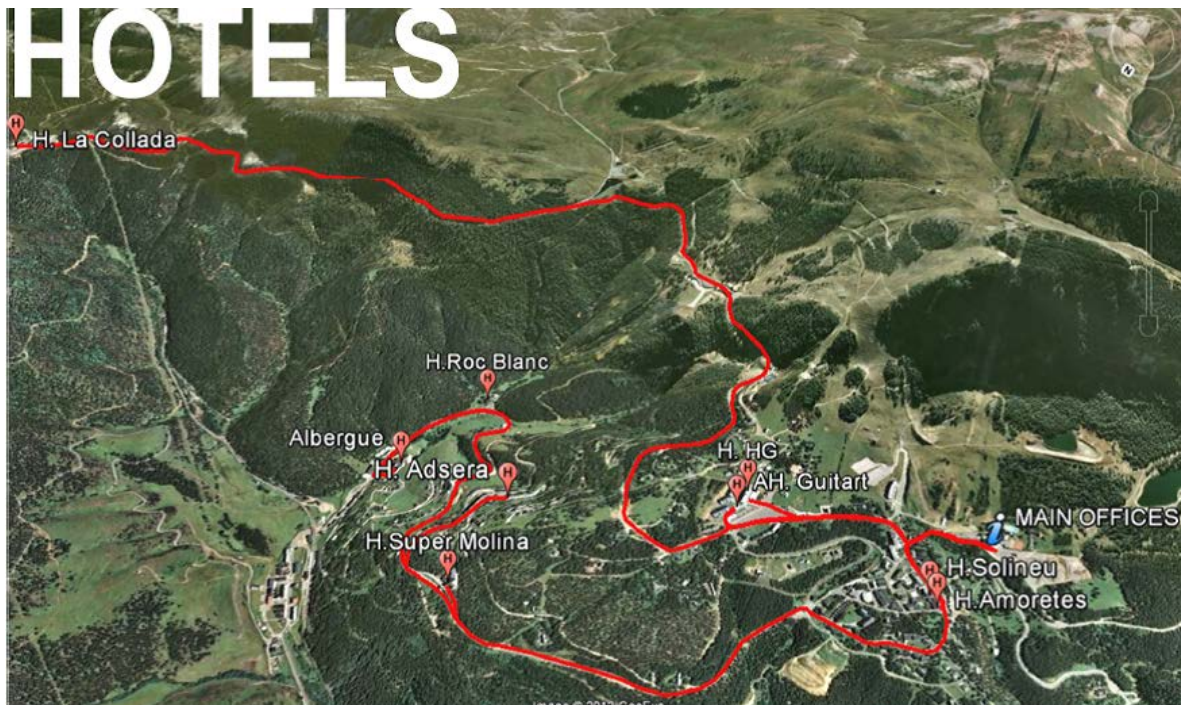
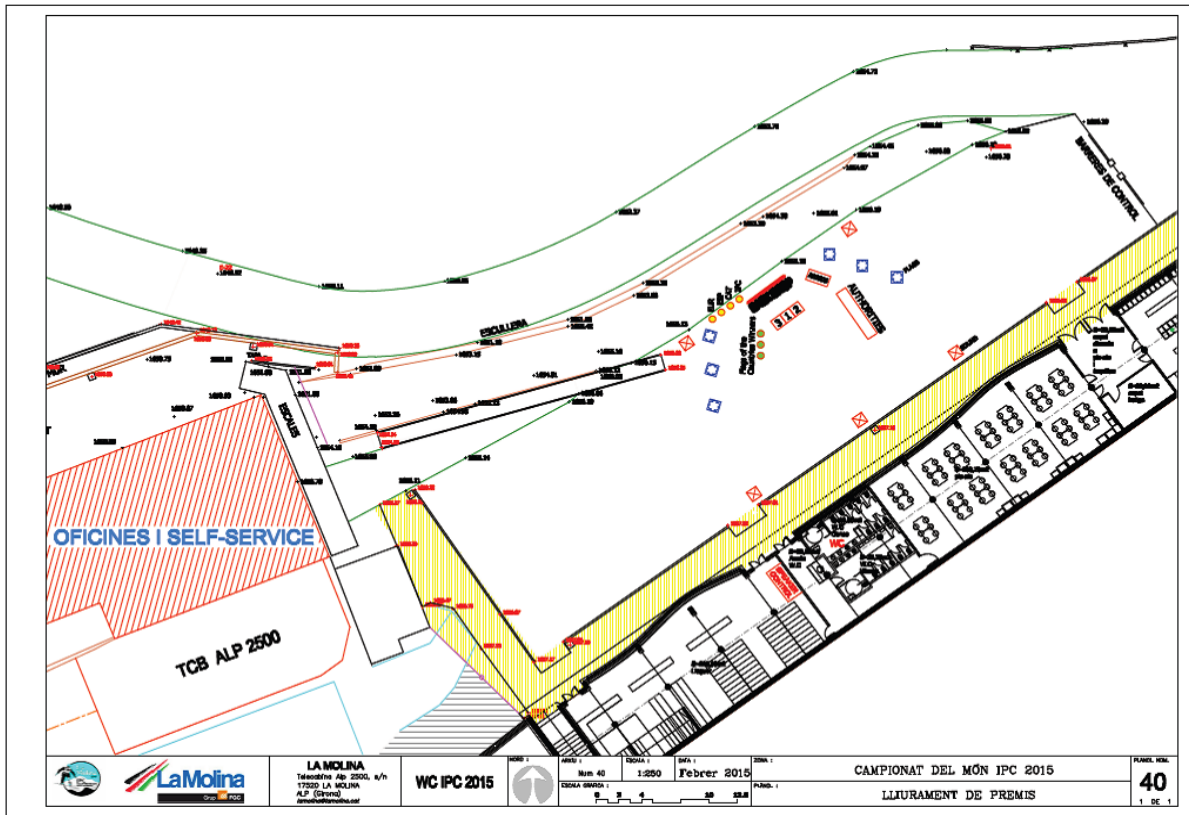


INFORMATION & CONTACT TELEPHONE

www.lamolina.cat
comercial@lamolina.cat

(+34) 972 89 20 31 – (+34) 972 14 50 87





4 Accommodation

The accommodation and accreditation office will be located at the Car Park of Muntanya Sagrada (P1), in front of the Gondola (Telecabina Alp 2500) close to the Main Offices.

Hospitalities timetable at Museum La Molina (phone contact 972-145-018 or Mr Lluís CARMONA 652-919-700)

February, Friday 20th

To

March, Sunday 1st

From 09.00 – 13.00 am to 15.00- 20.00 pm

Please note that accommodation will be available at the IPCAS rate for the dates of the program only.

€ 100 - per day Two-four beds (Full board and lift ticket included)*

€ 120 – per day Single Room (Full board and lift ticket included)*

*Tourist tax not included (paid directly to the Hotel)

€ 50 - per day without lodging agreement by the LOC

(Accreditation)

Each team will be held responsible for any damage incurred during the stay. Any kind of extras must be paid by the teams or athletes themselves. “No Shows” become charged to the National Associations.

Accommodation for **extra nights** will be provided as follows:

Early arrivals and late departures are subject to availability and are not available at IPCAS rate.

! Important for accommodation-reservation: In case of early arrival or late departure, the extra cost per person for half-board accommodation is **85€** lift. (Ticket not included)

5 Meals location

Location: Breakfast & dinner: each team at his hotel
 Lunch: at the Self-service building, close to the main offices.
 (Look at Ground Map: number 3)

Timetable: according to the competitions program:

Lunch open from: 12:30 to 15:30

Breakfast & dinner: TBA / TBD

6 Accreditation

The accreditation card will be the Ski-pass

To have the accreditations ready before the arrival is necessary to upload team member's photos to <http://ath-reg.lamolina.cat> (Available from 17th January 2015)



FRONT

The holder of this accreditation knows and accepts the rules of the LOC and IPC World Championships. This card remains the property of the IPC and the LOC.

ACCESS ENTITLEMENT

■	Field of Play – Operational Areas (Back House) General Circulation Areas (Front of House)
■	Field of Play – Operational Areas (Back House) General Circulation Areas (Front of House)
□	General Circulation Areas (Front of House)
2	Athlete Preparation Areas
4	Media Areas
6	Paralympic Family Areas - Guests

accreditation

BACK

7 Agreement athletes

This Championships Identity and Accreditation Card (CIAC) remains the property of the International Paralympics Committee (IPC) and can be withdrawn, with immediate effect, at the IPC's sole discretion.

By using this Card, I agree to be filmed, televised, photographed, identified and otherwise recorded during the IPC Sports Championships under the conditions and for the purposes now or hereafter authorized by the IPC in relation to the promotion of the IPC Sports Championships and the Paralympics Movement.

I agree that all photographs and moving images taken by me at the IPC Sports Championships, including those of athletes competing within any Championships venue(s), shall be used solely for personal and non-commercial purposes, unless the prior written consent is obtained from the IPC.

I also confirm that I fulfil the qualifications required by the IPC in order to be issued this CIAC and that I shall comply with the IPC Code of Ethics.

I also agree to information about myself being collected by the IPC and the Organizing Committee and to such a data being stored and used by them, and, where necessary, third parties, for the purposes of facilitating my participation in, and/or organizing, IPC Sports Championships.

For Staff and Athletes accreditations please go to: <http://ath-reg.lamolina.cat> (Available from 17th January 2015)

For media accreditations please go to: <http://www.paralympic.org/la-molina-2015/media>
(Available)

8 Race office & captains meeting

Location: at the Museum La Molina

	Saturday 21.02.2015	Sunday 22.02.2015	Monday 23.02.2015
Race Office timetable SBX	10.00–22.00	10.00–22.00	10.00–22.00
Captains Meeting timetable	18.00	16.00	16.00

	Wednesday 25.02.2015	Thursday 26.02.2015	Friday 27.02.2015
Race Office timetable SB	10.00–22.00	10.00–22.00	10.00–22.00
Captains Meeting timetable	18.00	18.00	16.00

9 Press centre

Location: at the Restaurant Bosc, on 2nd floor. (Look at Ground Map number **3**)

MEDIA IPC La Molina 2015

Link media center: <http://www.paralympic.org/news>

Accreditation (mandatory to fill in the online form): <http://www.paralympic.org/la-molina-2015/media>

Contact

E-mail: xcomm.329@gmail.com

Telephone: (+34) 607 754 170

Contact person: Ingrid Vilà

Press room schedules

February, from **21th** to **28th**

From **8.30 a.m** to **7.30 p.m**

10 Teams' hospitality at the competition venues

Location: Will be located at the hangar (next to the chairlift) in Alabaus Area, in front of the Finish Area.
Look at Ground Map: number **3**



11 Ceremonies

SBX Opening Ceremony (FEBRUARY, Tuesday 24th): 18.00 to 19.30 at Alp

-**Flowers Ceremony** of the day. After the competition on the Picnic Area (sight on Ground Map: number **3**)

-**Victory Ceremony**, immediately following the competition, at the Finish Area (sight on Ground Map: number **2**)

SB VICTORY CEREMONY & Closing Ceremony (FEBRUARY, Saturday 27th): 19.00 to 20.00 at Alp

12 Rules and regulations

For the 2015 IPC World Championships the 2015 IPC Rules and Regulations apply. They can be found at:

<http://www.paralympic.org/alpine-skiing/rules-and-regulations/rules>

13 Medical and anti-doping information

13.1 Anti-Doping

Anti-Doping

The IPC is the responsible authority for the anti-doping program at this event and the 2015 IPC Anti-Doping Code applies. Doping control samples may be collected both in-competition and out-of-competition. The samples will be urine and/or blood and can be collected anytime, anywhere.

All athletes that require the use of a prohibited substance for a medically justified reason must ensure that they have a valid Therapeutic Use Exemption (TUE) prior to the event. Athletes should bring a copy of their TUE approval form to the event. In the case of an emergency TUE application during the event period, athletes must apply to the IPC Medical Committee. All anti-doping and TUE questions can be sent to antidoping@paralympic.org.

For further information regarding the rules, please click on:

<http://www.paralympic.org/alpine-skiing/rules-and-regulations/anti-doping>

13.2 Medical record

Medical services will be provided at the official competition venue. There will be a Medical Officer at the medical tent equipped with first aid materials.

The Medical Officer will be responsible for medical arrangements for the competition and will supervise medical support to competitors, which includes recording all injuries and authorizing medical withdrawals, if necessary. They will also supervise the medical tent including all essential first aid equipment and materials.

First aid and limited medical facilities will be available at the Medical Tent located at the competition venue.

- RACES:
At the Start:
1 PATROL SERVICE WITH STRETCHER AND FIRST AID.
1 DOCTOR

- TRAININGS: 1 PATROL SERVICE WITH STRETCHER AND FIRST AID.

- MEDICAL CENTER:
1 DOCTOR
1 NURSE

- FINISH AREA
1 PATROL SERVICE WITH STRETCHER AND FIRST AID.
1 DOCTOR, 1 NURSE.

- HELICOPTER SERVICE: It will be in call.

- The Medical staff will be communicating by radios.

TELEPHONE CONTACTS

DOCTOR OF RACE:	TBA
CHIEF OF RACE:	Luis Breiffuss Tel.: +34 647.33.36.68
RESORT CONTROL:	Tel.: +34 972 14.50.87
MEDICAL CENTRE:	Tel.: +34 972 89.29.28
HOSPITAL CENTRE:	Tel.: +34 972 88.01.50

Deadline: 1st week of February of 2015

Send to: ipc@lamolina.cat

Application for using radio frequency

National Federation /		Contact person /	
Zip-code		Phone /	
Town /		Fax /	
Street /		E-Mail	

APPLICATION FOR USING RADIO

Brand Name	
Type (model) of radio	
Power (W)	
Operation frequency (MHz)	
Total number of radios	

14 Liability & accident insurance

All athletes, officials and other representatives of National Associations will attend at their own risk. The organizer declines any liability for accidents, damaged or lost equipment and second or third party claims, injuries of athletes, officials or any other persons during the event. All participants have to be sufficiently insured against accidents and illness by themselves or their National Association.

Timetables and locations can be modified to organizational requirements.

In case of modifications teams will be properly informed at the Captains Meeting and at the hospitalities.

15 Programme

Friday 20-02-2015	Until 16:00	Arrival	Hotel
Saturday 21.02.2015	10:00	Coach meeting on the slope	ALABAUS
	12:00	INS - TEST	TBD
	18:00	1 st Team captain meeting	MUSEUM LA MOLINA
Sunday 22.02.2015	10:00	SBX Training (not official)	ALABAUS
	18:00	2 nd Team captain meeting	MUSEUM LA MOLINA
Monday 23.02.2015	10:00	SBX Training (official)	ALABAUS
	16:00	3rd Team captain meeting & Opening Ceremony	MUSEUM LA MOLINA
Tuesday 24.02.2015	10:00	SBX– Race	ALABAUS
	16:00	Victory Ceremony	Alp
Wednesday 25.02.2015	DAY OFF		
	16:00	4 rd Team captain meeting	MUSEUM LA MOLINA
Thursday 26.02.2015	10:00	SB Training (not official)	ALABAUS
	18:00	5 rd Team captain meeting	MUSEUM LA MOLINA
Friday 27.02.2015	10:00	SB Training (official)	ALABAUS
	18:00	6 rd Team captain meeting	MUSEUM LA MOLINA
Saturday 28.02.2015	10:00	SB-Race	ALABAUS
	19:00	Victory Ceremony & Closing Ceremony	ALP
Sunday 1.03.15		Departure	

USEFUL TELEPHONE NUMBERS		
SKI RESORT – LA MOLINA		
Main Offices	+34 972 89 20 31	www.lamolina2011.cat www.lamolina.cat
Accommodation Office – La Molina	+34 652 919 700	
Accreditation Office	+ 34 972 145 018	
Race Office	+34 972 145 018	
MEDICAL CENTRE		
Medical Centre – La Molina (from 9.00 to 17.00)	+34 972 89 29 82	
TEAMS HOTELS		
Hotel Adserà	+34 972 89 20 01	hotel@hoteladsera.com
Hotel La Collada	+34 972 89 21 00	http://www.guitarthotels.com/es/hotel-la-molina-masella-pirineos/guitart-termes-la-collada/inicio/guitart
Aparthotel Guitart	+34 972 89 27 70	http://www.guitarthotels.com/es/apartamento-la-molina-masella-pirineos/guitart-la-molina-aparthotel/inicio/guitart
Hotel HG	+34 972 89 29 75	hglamolina@grupohg.com
Hotel Solineu	+34 972 89 20 23	http://www.hotel-solineu-la-molina.com/index_en.htm#guest-reviews
Hotel Supermolina	+34 972 14 50 03	hotelsupermolina@hotelsupermolina.com

EMERGENCY / SECURITY		
Medical Emergency	112	
Police		
Fire		
TRANSPORT / TRANSFER		
AENA (Spanish Airports)	+34 902 404 704 +34 91 321 10 00	http://www.aena.es/csee/Satellite/HomeAena/en/
Tourism Office BCN Airport	+34 93 478 47 04	http://www.barcelona-tourist-guide.com/en/airport/facilities-t2/barcelona-airport-tourist-information.html
RENFE (Railway)	+34 902 240 202 +34 93 495 60 42 +34 93 736 89 66	http://www.renfe.com/EN/viajeros/cercanias/barcelona/index.html
Road & Traffic Conditions	+34 900 123 505	http://www.dgt.es/es/
Weather Forecast	+34 807 012 012	http://www.meteo.cat/